

ANNUAL
REPORT

2017

BECAUSE
OF YOU



Building Stronger Families

11,087 PEOPLE
SERVED!

Mission

The Family Place is all about building stronger families and protecting children in Cache and Rich Counties. Working with both parents and children, we are here to build healthy relationships and help develop new approaches to family life. We strive to build stronger families by hosting fun, family-focused events in the community as well as by offering a variety of programs such as workshops, counseling, and our Kid's Place. The Family Place is also home to The Starfish Children's Shelter, the only shelter for children ages newborn to 11 in Cache and Rich counties. The Family Place will always be known as a place for families.

The Family Place is a private 501(c) 3 nonprofit charitable organization governed by a board of directors consisting of local citizens. The organization receives funding primarily through grants and private donations. In addition to financial funding, The Family Place receives supply donations from various businesses and community members.

Locations



Belva Hansen
The Family Place
1525 N. 200 W.
Logan, UT 84341



Norma Miller
The Family Place
10 N. 600 E.
Hyrum, UT 84319



Smithfield
The Family Place
502 S. Main St.
Smithfield, UT 84335



The Family Place Programs at a glance

5,812

Hours of care for children in
The Starfish Children's Shelter

2,115

Clients served by The Kid's Place

8,511

People taught by The Family
Place Educational Services

407

Clients supported by The Family
Place Therapy Department



**BENJI SUFFERED FROM
SEVERE NEGLECT AND ABUSE
BEFORE COMING TO THE
STARFISH CHILDREN'S
SHELTER.**

**HE WAS SURPRISED WHEN
HE LEARNED HE COULD
HAVE FOOD WHENEVER
HE WAS HUNGRY.**

The Starfish Children's Shelter

The Starfish Children's Shelter is a loving home for children in transition to foster care. While in transition with us, children begin the road to healing with trauma-informed care and counseling services.



54 CHILDREN
SPENT OVER
5,800 HOURS
IN OUR CARE.

The Kid's Place

Providing parents with a safe place for their kids.

Julie was at the end of her rope. She was working to put her husband through school and raise two young children who would not sleep at night. She was exhausted—physically and emotionally—and was also experiencing severe postpartum depression.



Julie wept when she was offered a spot for Scheduled Weekly Care in our Kid's Place. Finally, she had two hours a week to rest and care for herself without worrying about her children. It only took a few weeks before there was hope in her eyes again.

1,263 CHILDREN
WERE CARED FOR IN
OUR KID'S PLACE.
852 PARENTS WERE SUPPORTED
BY OUR KID'S PLACE.

Education



Sydney, a 10-year-old girl, witnessed domestic violence in her home. She watched as her father attempted to strangle her mother. After this experience, Sydney struggled to maintain control of her emotions. When she became upset, she would put her hands around her own throat in an attempt to strangle herself, even to the point of passing out. Our peer parent used a puppet, Safety Sally, to demonstrate safe and unsafe touches. Sydney recognized that

what she had witnessed, and what she had been acting out, were not safe touches. Working with our peer educator she learned better ways to cope with her emotions.



**8,511 CHILDREN & ADULTS
PARTICIPATED IN EDUCATIONAL
WORKSHOPS, CLASSES, & SEMINARS.**

Counseling



When Lauren was a child, her father sexually assaulted her. Years later, as an adult, she came to The Family Place seeking help because she was experiencing post-traumatic stress disorder symptoms, such as flashbacks and nightmares. Lauren struggled with suicidal thoughts and had already been hospitalized twice for previous suicide attempts. After working

with our therapy department and Kid's Place she completed her therapeutic goals.

She wrote a letter to The Family Place saying, "Thank you for all your help and showing me new ways I can cope with myself when life gets hard. You gave me hope when I felt hopeless. I see my world as a better place."

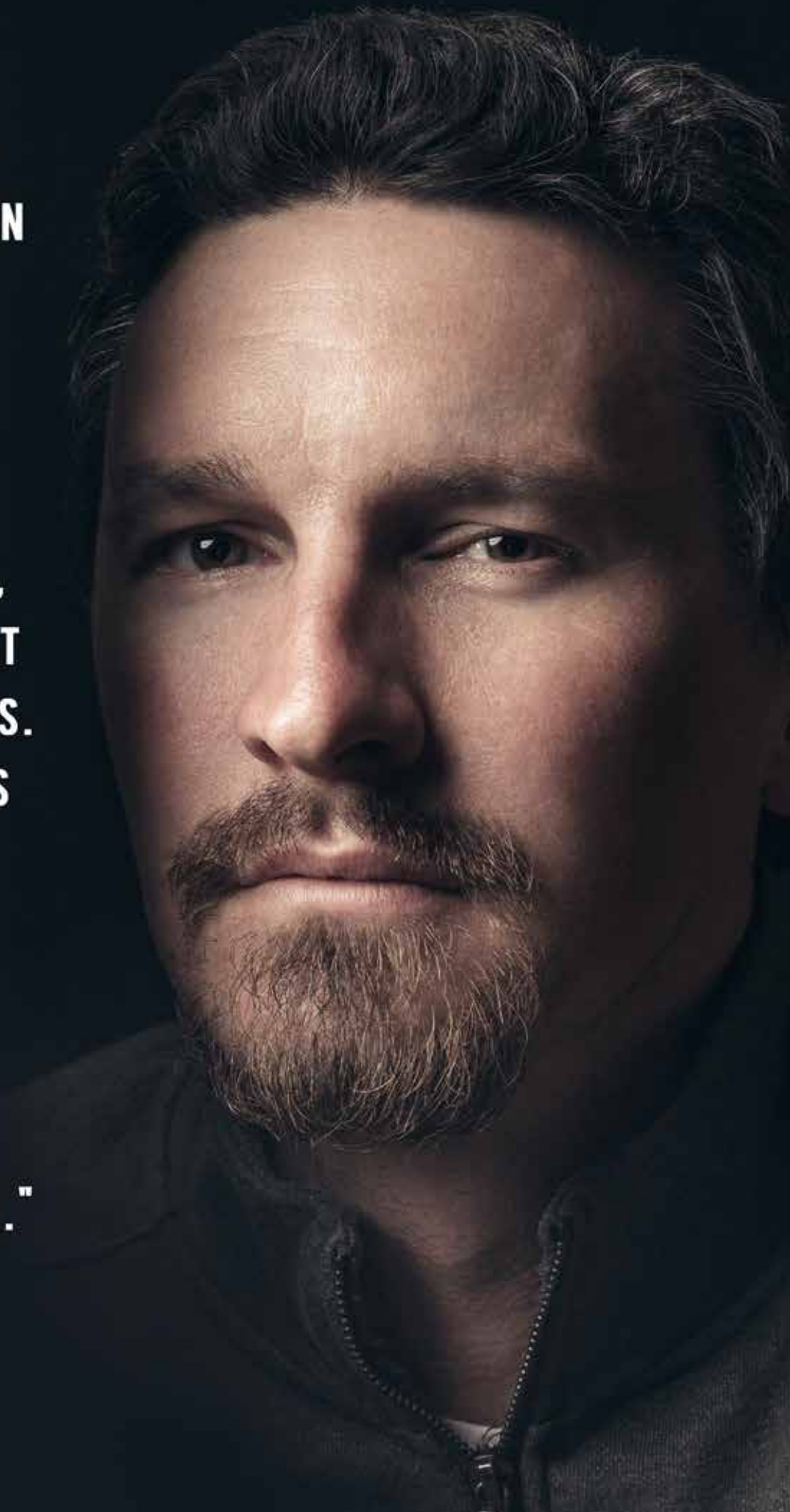
Our compassionate therapists provide support, guidance, and practical strategies to further empower you to overcome life's challenges.

The Trauma Resiliency Project

The Family Place staff are specially trained through The National Child Traumatic Stress Network to help families, children, and individuals understand and overcome traumatic experiences.

**"WHEN I FOUND
OUT MY CHILDREN
WERE BEING
SEXUALLY
ABUSED BY
A NEIGHBOR
I WAS SHOCKED,
STUNNED, AND AT
A COMPLETE LOSS.
OUR FAMILY WAS
SHATTERED.
THE FAMILY
PLACE HELPED
US TO PUT THE
PIECES BACK
TOGETHER AGAIN."**

- LOVING FATHER



A note from our director

The Family Place is a place for all families. Parents are uplifted, resilience is gained, and children are kept safe. That is what The Family Place is all about—strengthening families and protecting children.

This year's annual report is something for our community to be proud of. The lives that have been forever changed and strengthened are a result of our combined efforts. The strong families we have the opportunity to work with, our generous donors, dedicated volunteers, exceptional community partners, and unparalleled board and staff make our humble non-profit agency extraordinary.

A group of caring and compassionate community volunteers opened The Family Place in the small living room of an old house during the early 80's. I'm certain they never would have guessed that The Family Place would become a multi-facility organization that serves over 11,000 children and parents annually. Although we have grown over the years, we have stayed true to our mission and heart of our cause.

I am particularly proud of the work The Family Place has done this past year in the realm of childhood trauma. The Family Place is an affiliate of the National Child Trauma Stress Network. This opportunity allows us to work with leading experts across the country to collaborate on ways to help children and families who have experienced challenging situations. Please reach out to The Family Place to find support through our Kid's Place, Counseling, and Education Departments. Thank you all for your belief in protecting children and strengthening families. Thank you for your willingness to reach out for help. Thank you for your continued donations and support.

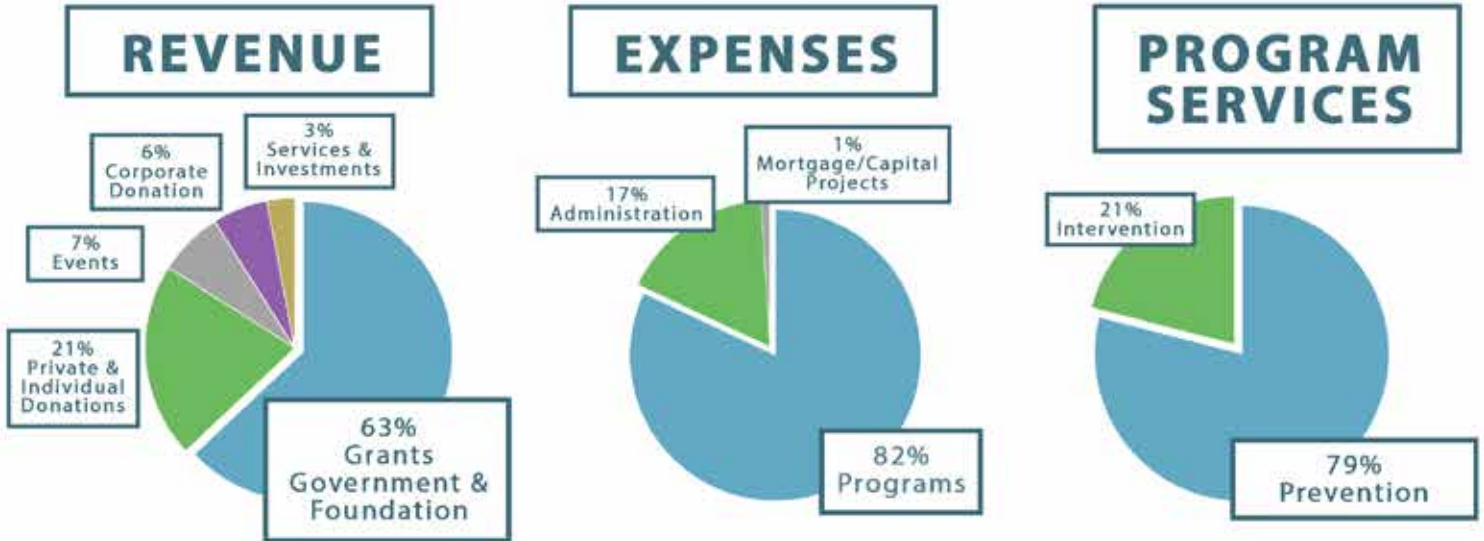
Warmly,



Esterlee A. Molyneux
Executive Director



Financial Report



How volunteers make an impact



1,264 VOLUNTEERS & 15 INTERNS CONTRIBUTED
10,286 HOURS SAVING \$142,884

Answering Community Needs

Enhanced Family Place Services

- Affordable therapy in both English and Spanish
- Specialized services for teens, particularly those with suicide risk factors
- Specialized services for children
- Expanded family-based therapy services
- Immediate support to avoid lengthy wait lists
- Services that encourage resiliency in the face of trauma

2018 Family Place Needs

- Kid's Place staff & hours expansion (Funding)
- Starfish Children's Shelter (Funding)
- Therapy Dog (Funding)
- Construction of the Norma Miller - The Family Place Education Center (Funding)
- Truck & Donation Trailer (Donation)



Leave a Legacy

Do you know an individual or family with a passion for protecting children and strengthening families? Their legacy can be remembered by naming The Smithfield Family Place in their honor!



Ways to Give



**STOCK
GIFTS**



**RECURRING
GIFTS**



**ONE-TIME
GIFTS**



**PLANNED
GIVING**



**CORPORATE
SPONSORSHIP**